

**PART NUMBER:** LC1030SS-CB-PXD**DESCRIPTION:** 1000 Series Leveling Caster: SS Option, Corner Baseplate, 3.0in Polyurethane Whls, Delrin Brg**SPECIFICATIONS**

LOAD CAPACITY: 900 lbs.

MATERIAL OPTION: SS Option (100% Stainless)

OVERALL HEIGHT: 4.13 in.

SWIVEL RADIUS: 3.85 in.

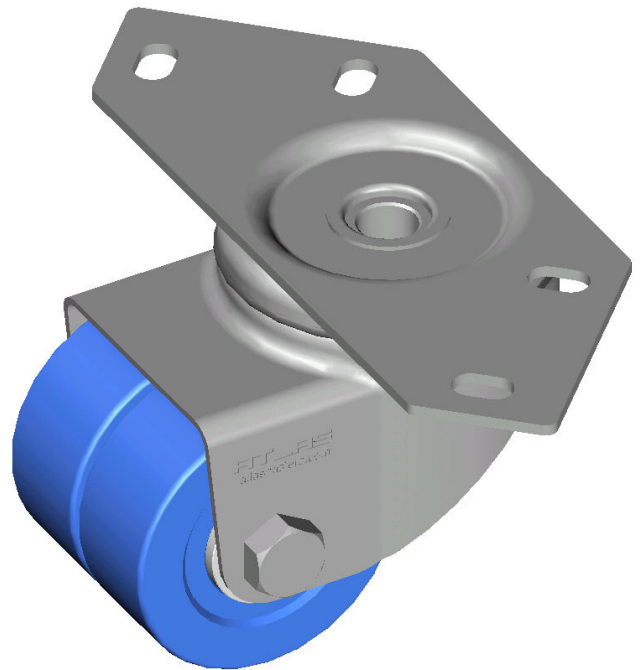
WHEEL DIAMETER: 3.00 in.

WHEEL MATERIAL: Polyurethane 75D

WHEEL BEARING: Delrin

TREAD WIDTH: 2.50 in.

LEVELER THREAD: 5/8-11 UNC-2A

**DRAWING NOTE:** Leveler is shown below for reference only. It has a different part number and must be purchased separately.