

**PART NUMBER:** LC525SS-CB-PXD

**DESCRIPTION:** 500 Series Leveling Caster: SS Option, Corner Baseplate, 2.5in Polyurethane Whls, Delrin Brg

### SPECIFICATIONS

LOAD CAPACITY: 450 lbs.

MATERIAL OPTION: SS Option (100% Stainless)

OVERALL HEIGHT: 3.38 in.

SWIVEL RADIUS: 3.15 in.

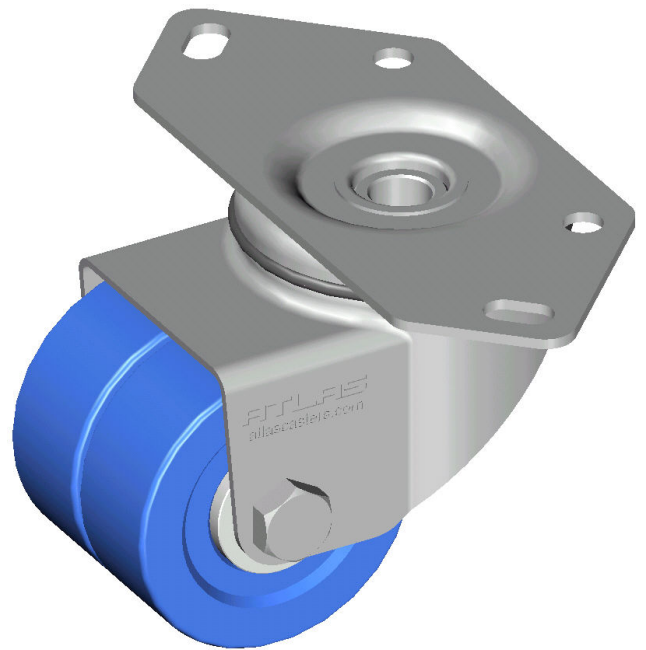
WHEEL DIAMETER: 2.50 in.

WHEEL MATERIAL: Polyurethane 75D

WHEEL BEARING: Delrin

TREAD WIDTH: 2.00 in.

LEVELER THREAD: 1/2-13 UNC-2A



**DRAWING NOTE:** Leveler is shown below for reference only. It has a different part number and must be purchased separately.

