

PART NUMBER: SC1030CS-SX-PHN-400

DESCRIPTION: 1000 Series Swivel Caster: CS Option, 4.00 in. Adj Height Stem, 3.0in Phenolic Whls, Plain Brg

SPECIFICATIONS

LOAD CAPACITY: 750 lbs.

MATERIAL OPTION: CS (~85% Stainless)

OVERALL HEIGHT: 4.00 in.

SWIVEL RADIUS: 3.85 in.

WHEEL DIAMETER: 3.00 in.

WHEEL MATERIAL: Phenolic

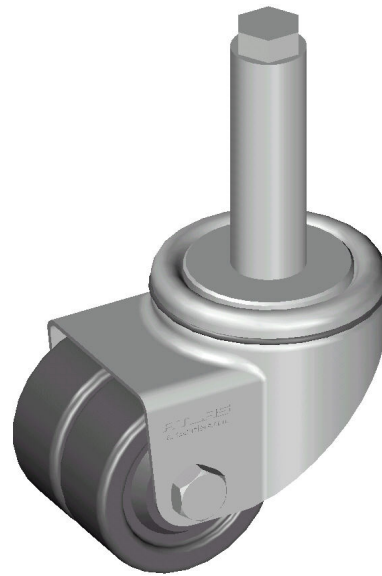
WHEEL BEARING: Plain

TREAD WIDTH: 2.50 in.

STEM LENGTH: 4.00 (A) in.

STEM THREAD: 1 1/8-12 UNF-2A

INSERT LENGTH: 1.25 in. (recommended stem insertion)



PRODUCT NOTES

1. Extend casters out evenly one turn at a time.
2. ONLY extend casters to dock the machine. DO NOT ship or transport the machine with casters extended.
3. MAXIMUM SYSTEM LOAD: 2,500 LBS (4 casters).

